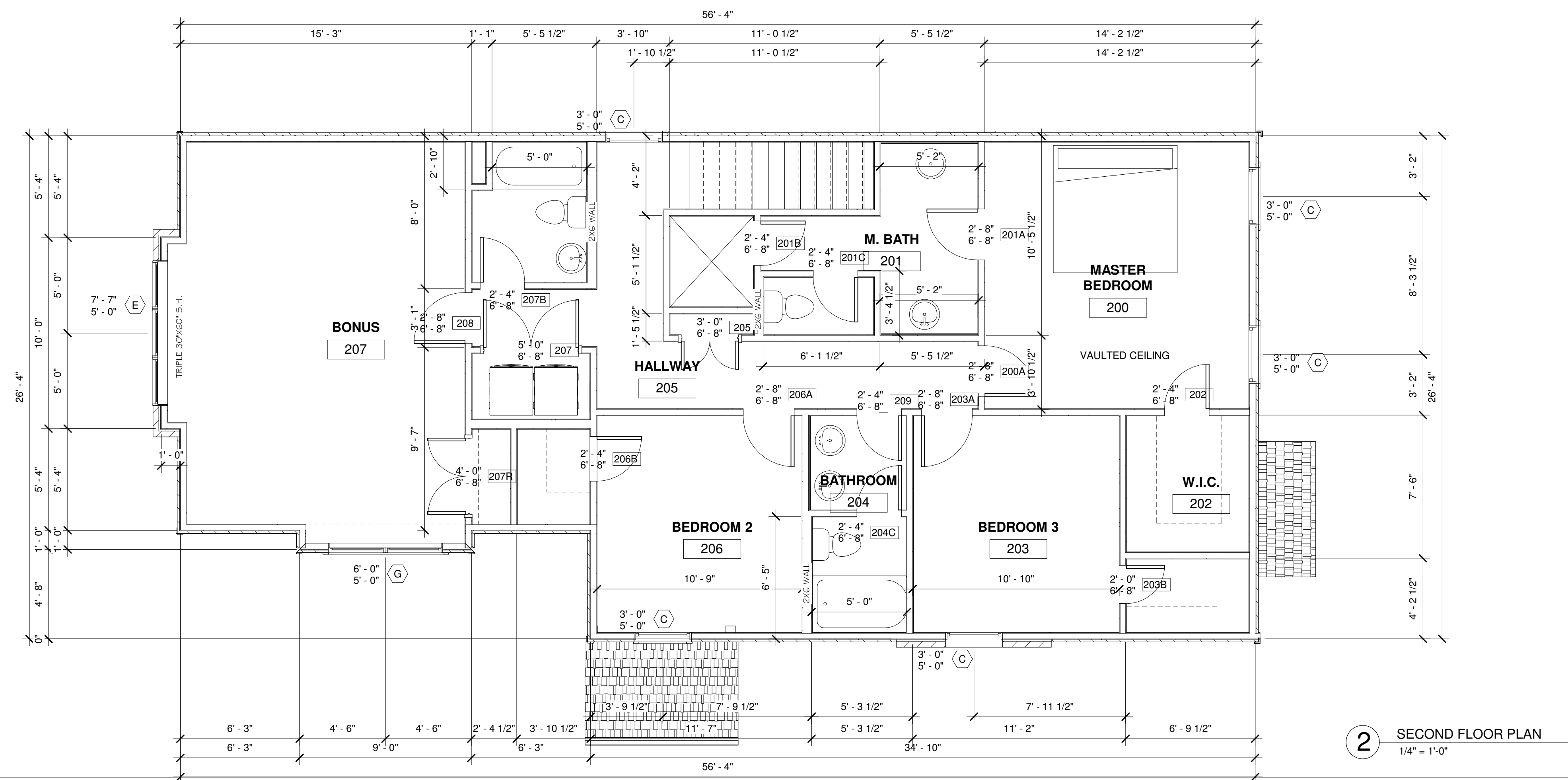


DOOR SCHEDULE				
Mark	ROOM NAME	DOOR		Type
		Width	Height	
001A	GARAGE	18'-0"	9'-0"	Owner Selected 18'x9' garage door
001B	GARAGE	2'-8"	6'-8"	WD - HC - 2' 8" x 6'-8"
002	OFFICE	2'-8"	6'-8"	WD - HC - 2' 8" x 6'-8"
005	PWDR	2'-4"	6'-8"	WD - HC - 2' 4" x 6'-8"
006A	DINING	3'-0"	8'-0"	SEE CATALOG
007	PAN.	2'-4"	6'-8"	WD - HC - 2' 4" x 6'-8"
008	LIVING	3'-0"	8'-0"	SEE CATALOG
200A	HALLWAY	2'-8"	6'-8"	WD - HC - 2' 8" x 6'-8"
201A	MASTER BEDROOM	2'-8"	6'-8"	WD - HC - 2' 8" x 6'-8"
201B	M. BATH	2'-4"	6'-8"	WD - HC - 2' 4" x 6'-8"
201C	M. BATH	2'-4"	6'-8"	WD - HC - 2' 4" x 6'-8"
202	MASTER BEDROOM	2'-4"	6'-8"	WD - HC - 2' 4" x 6'-8"
203A	HALLWAY	2'-8"	6'-8"	WD - HC - 2' 8" x 6'-8"
203B	BEDROOM 3	2'-0"	6'-8"	WD - HC - 2' 0" x 6'-8"
204C	BATHROOM	2'-4"	6'-8"	WD - HC - 2' 4" x 6'-8"
205	HALLWAY	3'-0"	6'-8"	WD - HC - 3' 0" x 6'-8"
206	DINING	2'-4"	6'-8"	WD - HC - 2' 4" x 6'-8"
206A	HALLWAY	2'-8"	6'-8"	WD - HC - 2' 8" x 6'-8"
206B	BEDROOM 2	2'-4"	6'-8"	WD - HC - 2' 4" x 6'-8"
207	HALLWAY	5'-0"	6'-8"	WD - HC - 5' 0" x 6'-8"
207B	HALLWAY	2'-4"	6'-8"	WD - HC - 2' 4" x 6'-8"
207R	BONUS	4'-0"	6'-8"	WD - HC - 4' 0" x 6'-8"
208	BONUS	2'-8"	6'-8"	WD - HC - 2' 8" x 6'-8"
209	HALLWAY	2'-4"	6'-8"	WD - HC - 2' 4" x 6'-8"

WINDOW SCHEDULE					
TYPE MARK	WIDTH	HEIGHT	TYPE	COUNT	Comments
A	2'-6"	6'-0"	Single Hung 30" x 72"	2	
B	7'-7"	6'-0"	TRIPLE 30"X72" S.H.	1	
C	3'-0"	5'-0"	Single Hung 36" x 60"	6	
D	2'-6"	4'-6"	Single Hung 30" x 54"	1	
E	7'-7"	5'-0"	TRIPLE 30"X60" S.H.	1	
G	6'-0"	5'-0"	DBL 36"X60" S.H.	1	
H	5'-0 1/2"	6'-0"	DBL 30"X72" S.H.	2	



FLOOR TO CEILING HEIGHTS:
1ST FLOOR: 9'
2ND FLOOR: 9'

AREA SCHEDULE	
NAME	AREA
FIRST FLOOR	929 SF
SECOND FLOOR	1327 SF
Grand total: 2	2256 SF

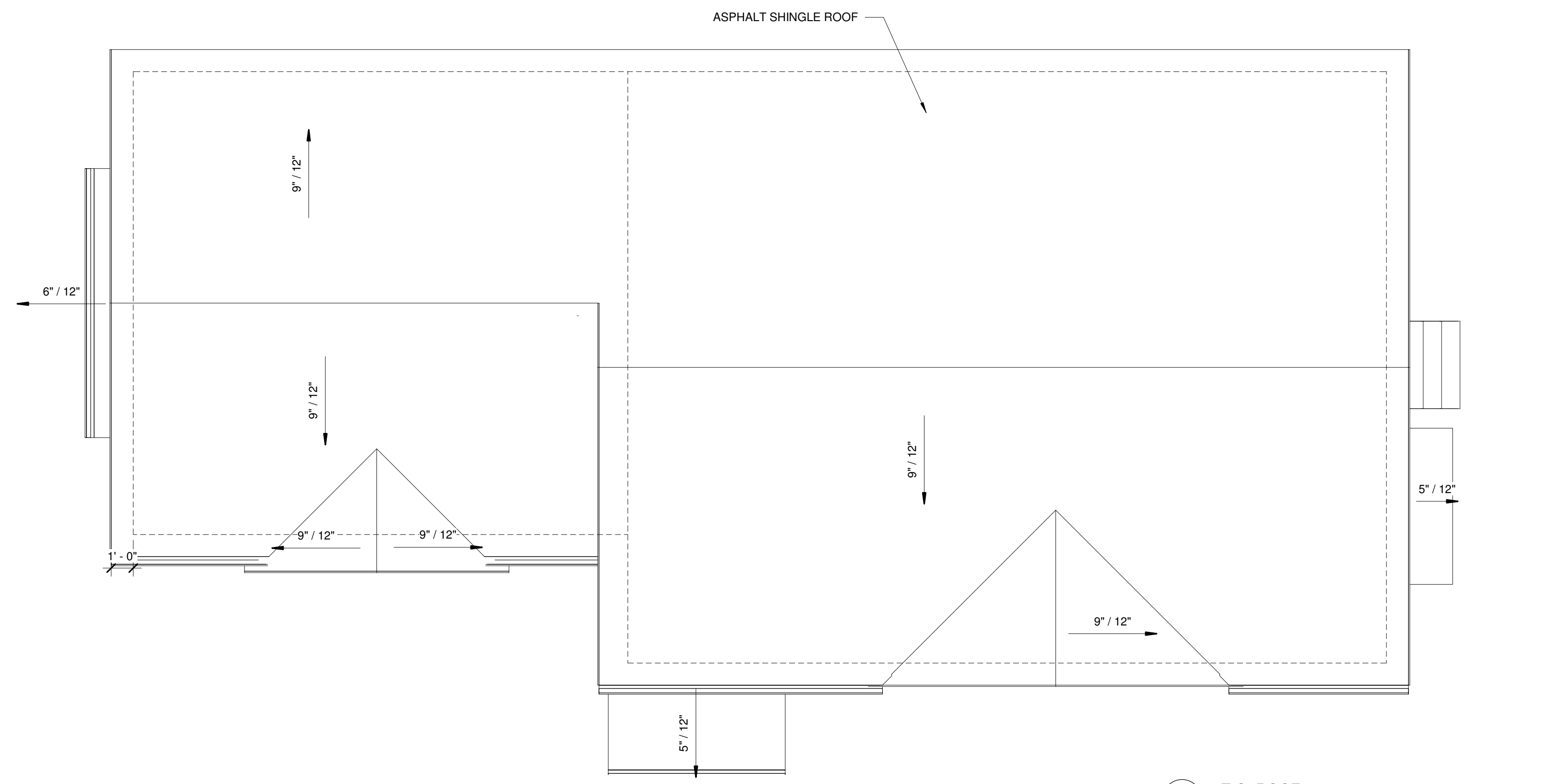
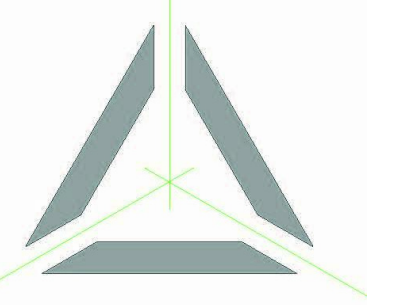
THESE DRAWINGS ARE FOR DESIGN INTENT
IT IS THE CONTRACTOR'S RESPONSIBILITY TO ENSURE CONSTRUCTION MEETS OR EXCEEDS ALL APPLICABLE CODES
IT IS THE CONTRACTOR'S RESPONSIBILITY TO COORDINATE ALL MECHANICAL, ELECTRICAL, PLUMBING AND STRUCTURAL SYSTEMS WITH THE FRAMEWORK AND AESTHETICS OF THIS HOUSE.

Sheet Information
Date: 4-24-2019
Job: 14.208
Number: AXIS CREATIVE, LLC
WILL JENNER
615.268.9887
2610 WESTWOOD DR
NASHVILLE, TN 37204
WILL@AXISCREATIVEGROUP.COM

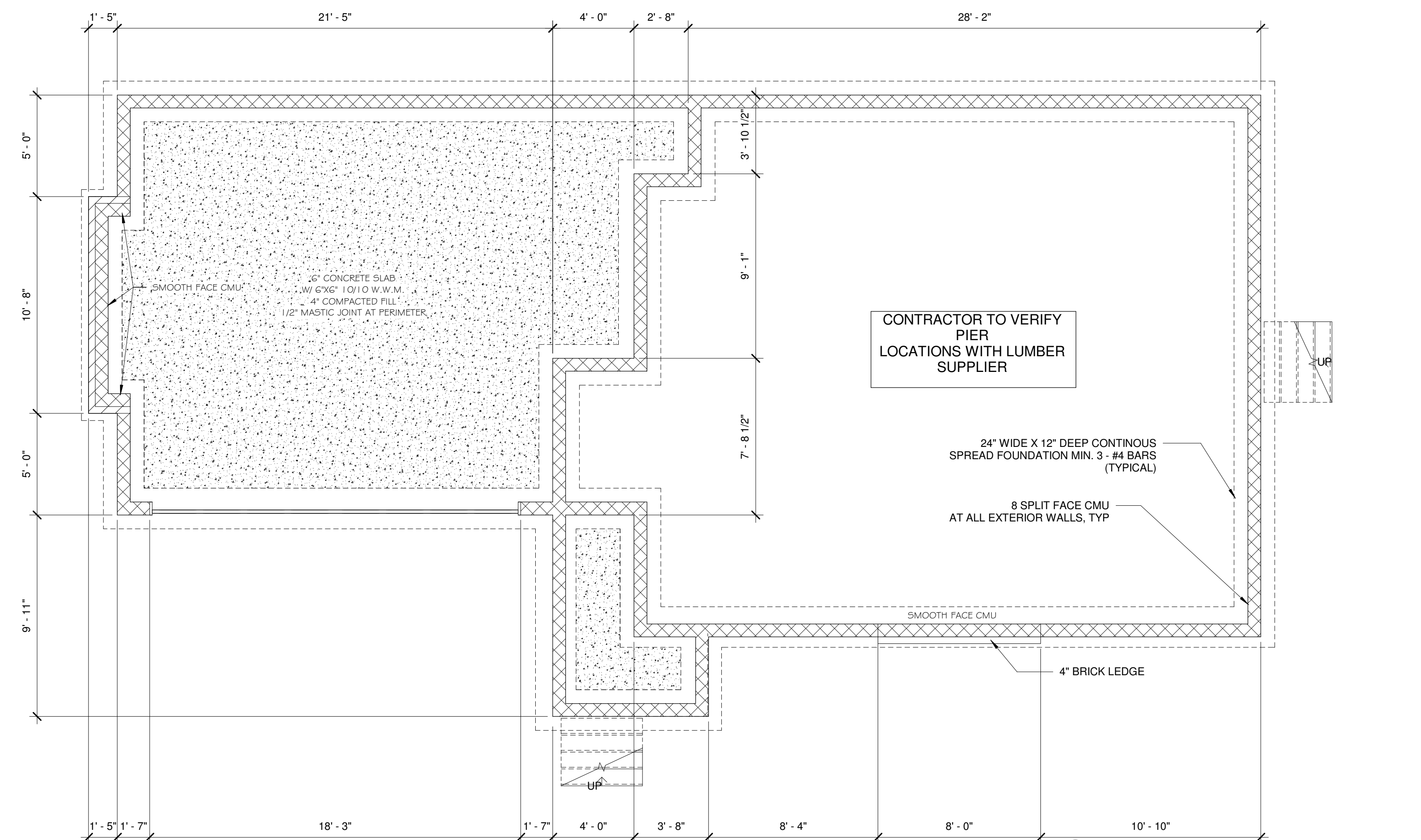
THESE DOCUMENTS ARE THE PROPERTY OF AXIS CREATIVE DESIGN, LLC. AND SHALL NOT BE REPRODUCED WITHOUT EXPRESSED WRITTEN CONSENT OF AXIS CREATIVE, LLC.
© AXIS CREATIVE, LLC. 2018

Sheet Description:
FLOOR PLANS

Sheet:
A100



1 T.O. ROOF
1/4" = 1'-0"



2 00.0 FOUNDATION
1/4" = 1'-0"

THESE DRAWINGS ARE
DESIGN INTENT

IT IS THE CONTRACTOR'S
RESPONSIBILITY TO
ENSURE CONSTRUCTION MEETS
OR EXCEEDS ALL
APPLICABLE CODES

IT IS THE CONTRACTOR'S
RESPONSIBILITY TO COORDINATE
ALL MECHANICAL, ELECTRICAL,
PLUMBING, AND STRUCTURAL
SYSTEMS WITH THE
FRAMEWORK AND AESTHETICS
OF THIS HOUSE.

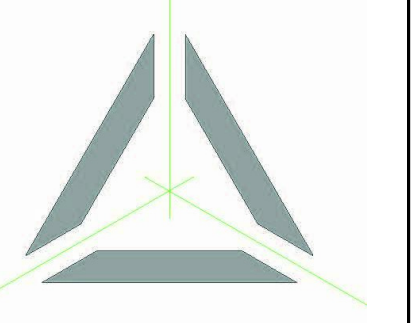
Sheet Information	
Date	4-24-2019
Job	14.208
Number	AXIS CREATIVE, LLC
WILL JENNER 615.268.9887 2610 WESTWOOD DR NASHVILLE, TN 37204 WILL@AXISCREATIVEGROUP.COM	

THESE DOCUMENTS ARE THE PROPERTY OF
AXIS CREATIVE DESIGN, LLC. AND SHALL NOT
BE REPRODUCED WITHOUT EXPRESSED
WRITTEN CONSENT OF AXIS CREATIVE, LLC.

© AXIS CREATIVE, LLC. 2018

Sheet Description:
ROOF/FOUNDATION
PLAN

Sheet:
A101



THESE DRAWINGS ARE FOR DESIGN INTENT
IT IS THE CONTRACTOR'S RESPONSIBILITY TO ENSURE CONSTRUCTION MEETS OR EXCEEDS ALL APPLICABLE CODES
IT IS THE CONTRACTOR'S RESPONSIBILITY TO COORDINATE ALL MECHANICAL, ELECTRICAL, PLUMBING, AND STRUCTURAL SYSTEMS WITH THE FRAMEWORK AND AESTHETICS OF THIS HOUSE.

Sheet Information	
Date	4-24-2019
Job	14.208
Number	AXIS CREATIVE, LLC
WILL JENNER 615.268.9887 2610 WESTWOOD DR NASHVILLE, TN 37204 WILL@AXISCREATIVEGROUP.COM	

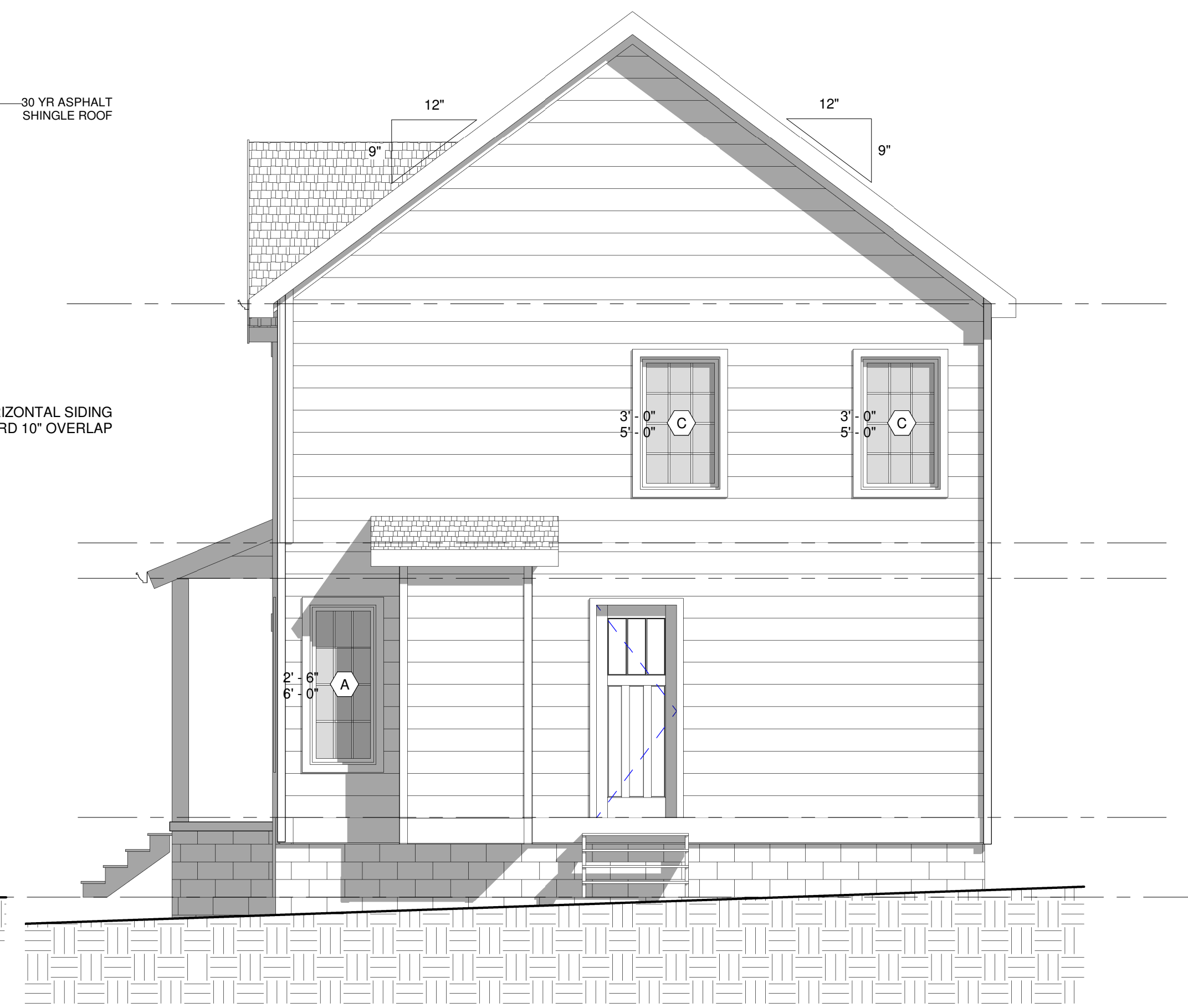
THESE DOCUMENTS ARE THE PROPERTY OF AXIS CREATIVE DESIGN, LLC. AND SHALL NOT BE REPRODUCED WITHOUT EXPRESSED WRITTEN CONSENT OF AXIS CREATIVE, LLC.

© AXIS CREATIVE, LLC. 2018
Sheet Description:
EXTERIOR ELEVATIONS

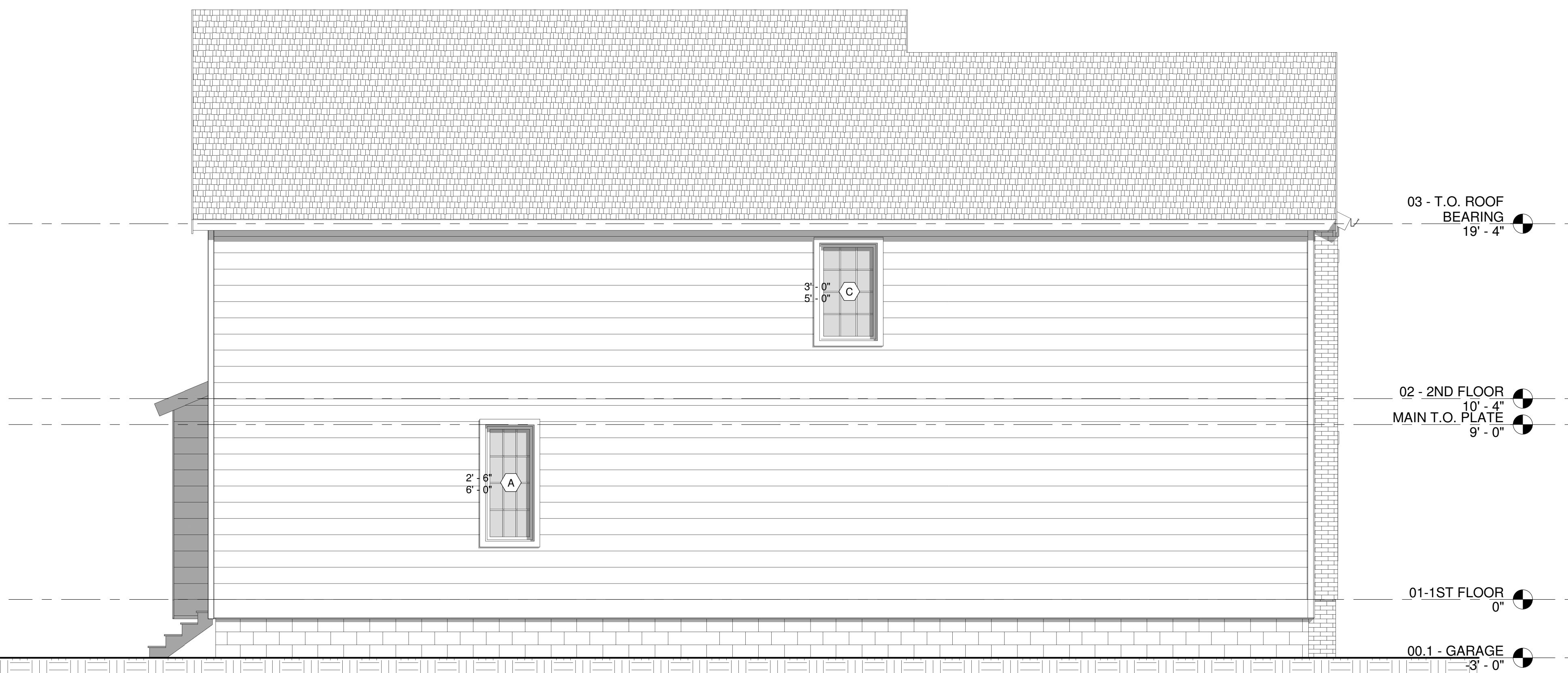
Sheet:
A300



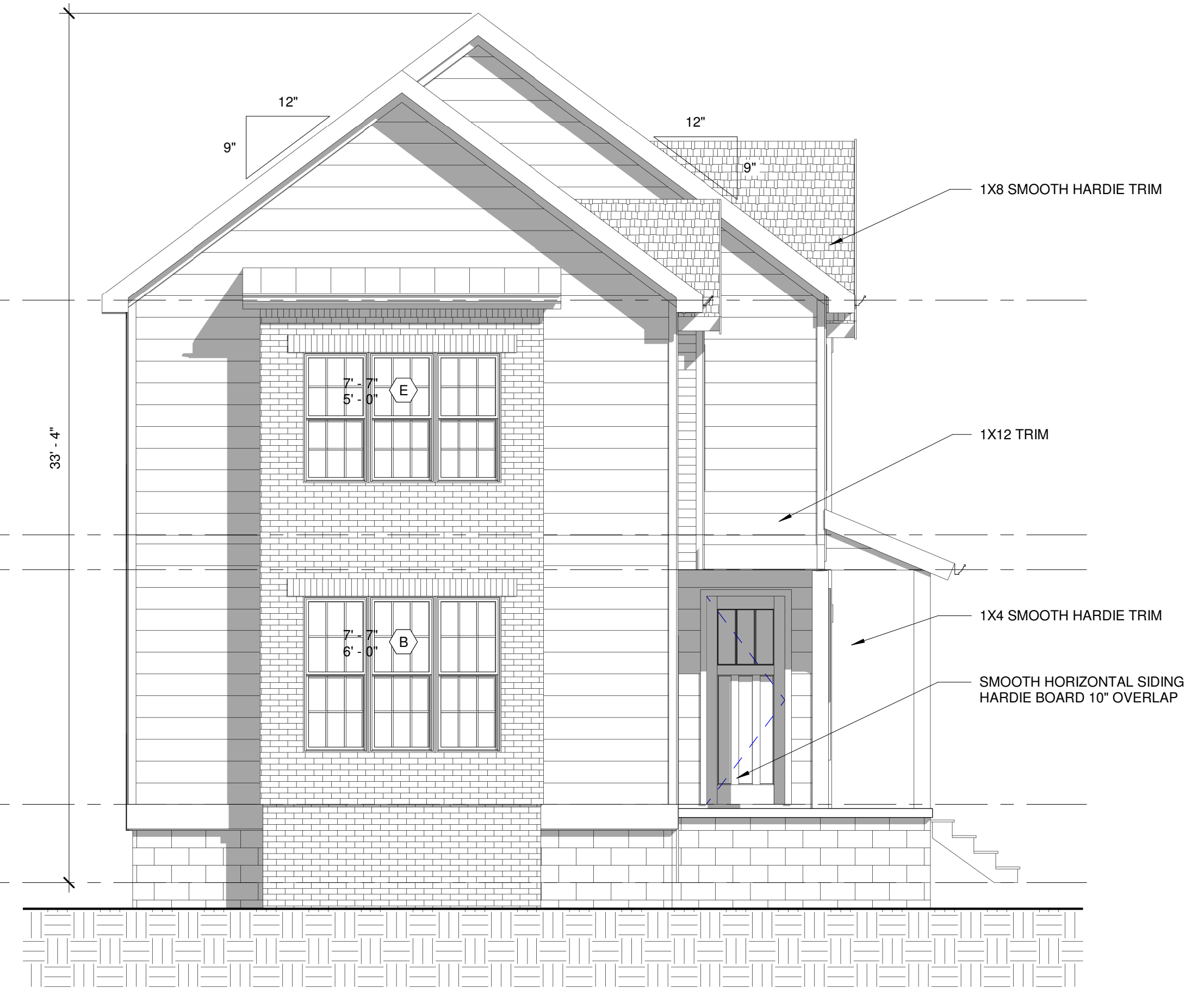
3 RIGHT ELEVATION
1/4" = 1'-0"



2 BACK ELEVATION
1/4" = 1'-0"



4 LEFT ELEVATION
1/4" = 1'-0"



1 FRONT ELEVATION
1/4" = 1'-0"